



Retail For Lease

Contact us:

Stuart Thain
Executive Vice President
+1 801 947 8303
stuart.thain@colliers.com

Zach Beaudry
Executive Vice President
+1 801 947 8319
zach.beaudry@colliers.com

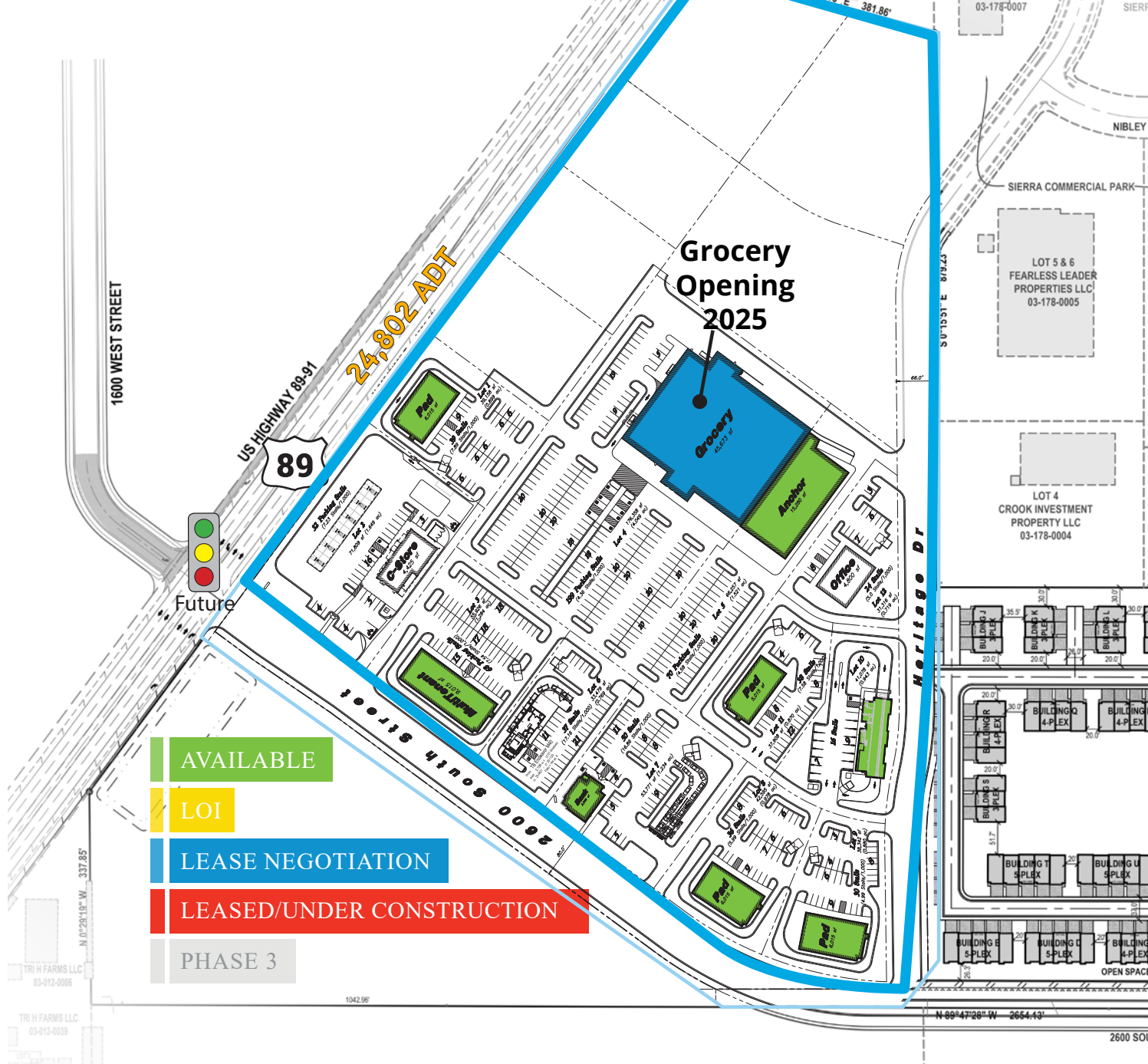
Grocery Anchored Shopping Center

2600S Highway 89-91
Logan, UT 84321

Property Highlights

- Pads for BTS and Sale
- High Traffic - 24,000+ ADT
- Grocery Anchor Scheduled to Open 2025
- Call for Pricing

Colliers
6440 S. Millrock Dr., Suite 500
Salt Lake City, UT 84121
Main: +1 801 947 8300
colliers.com



Demographics	1 Mile	3 Mile	5 Mile
Population			
2023 Estimated	6,561	28,672	78,557
2028 Projected	6,966	30,155	82,672
Households			
2023 Estimated	1,849	8,918	25,097
2028 Projected	2,000	9,524	26,861
Income			
2023 Median HHI	\$84,968	\$78,433	\$65,516
2023 Average HHI	\$100,326	\$97,379	\$89,155
2023 Per Capita	\$28,616	\$29,619	\$28,762

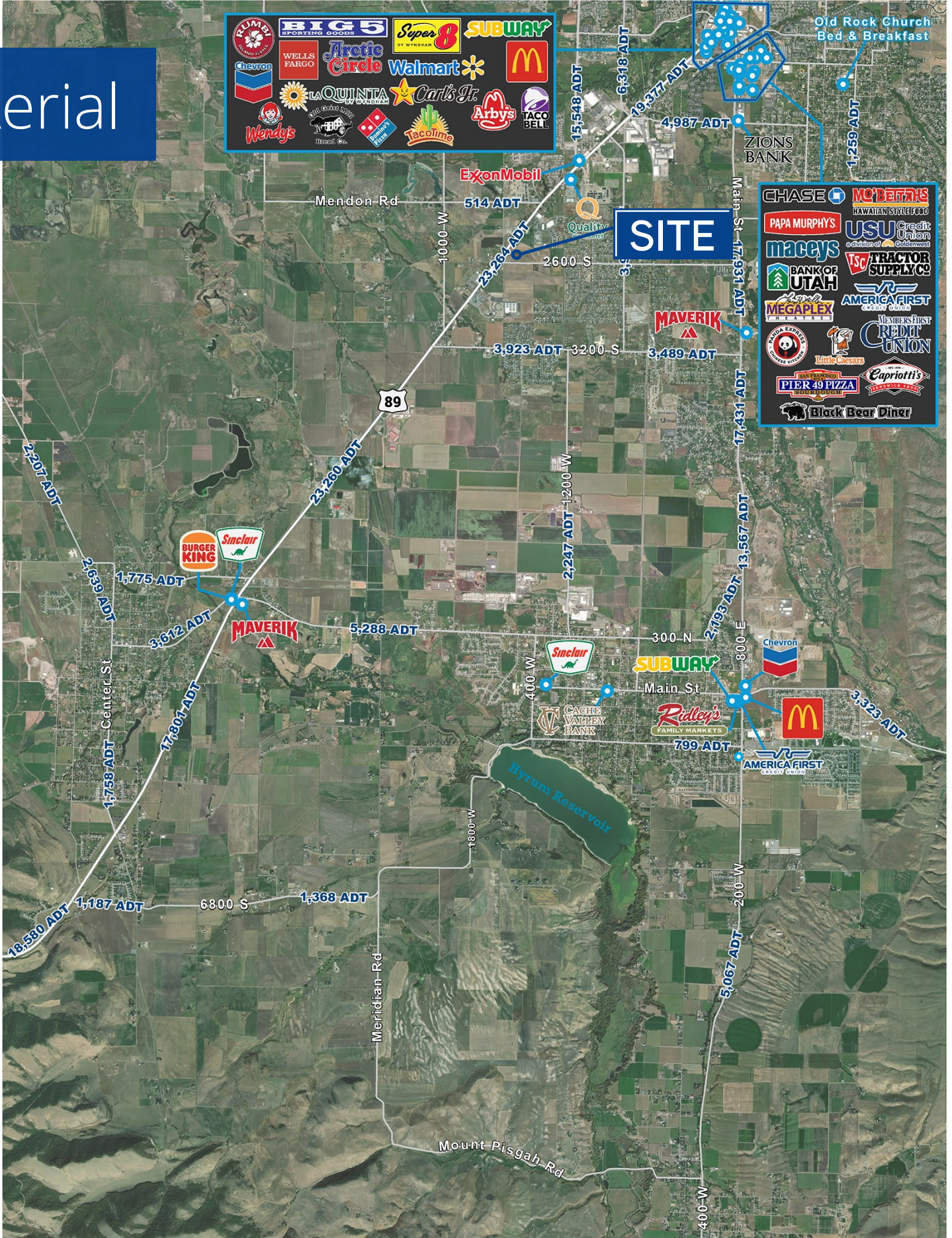
Information provided by ESRI Business Analyst

Contact us:

Stuart Thain
 Executive Vice President
 +1 801 947 8303
 stuart.thain@colliers.com

Zach Beaudry
 Executive Vice President
 +1 801 947 8319
 zach.beaudry@colliers.com

Aerial



This document has been prepared by Colliers International for advertising and general information only. Colliers International makes no guarantees, representations or warranties of any kind, expressed or implied, regarding the information including, but not limited to, warranties of content, accuracy and reliability. Any interested party should undertake their own inquiries as to the accuracy of the information. Colliers International excludes unequivocally all inferred or implied terms, conditions and warranties arising out of this document and excludes all liability for loss and damages arising there from. This publication is the copyrighted property of Colliers International and/or its licensor(s). ©2021. All rights reserved.

Colliers
 6440 S. Millrock Dr., Suite 500
 Salt Lake City, UT 84121
 Main: +1 801 947 8300
 colliers.com

